

PROFESSIONAL OFFICE
Evesham Medical

1605 Evesham Road, Voorhees, NJ 08043

FOR LEASE
+/- 3,718 RSF



Professional Office Available

PROPERTY HIGHLIGHTS

\$21.00/SF plus Electric

Second Floor – Medical:

Suite 201: 3,718 RSF

Notes: Fully fit out medical office with reception area, private exam rooms, large procedure room, kitchenette, private restrooms (2) and immediate access right off elevators. Patient Parking at the premises.

See attached Floor Plans

- Class 'A' medical/professional space
- Turn-Key Condition with Great Finishes
- Building Monument Signage Available
- Located on the corner of Evesham and Springdale Road in Voorhees within walking distance to restaurants, banks, and pharmacy
- Minutes from Routes 70 and 73, I-295 and Virtua Hospital
- Amenities in immediate proximity including WaWa, Royal Farms, CVS, Wells Fargo Bank, Fulton Bank, and numerous restaurants

FOR MORE INFORMATION CONTACT:

Rick Schwartz

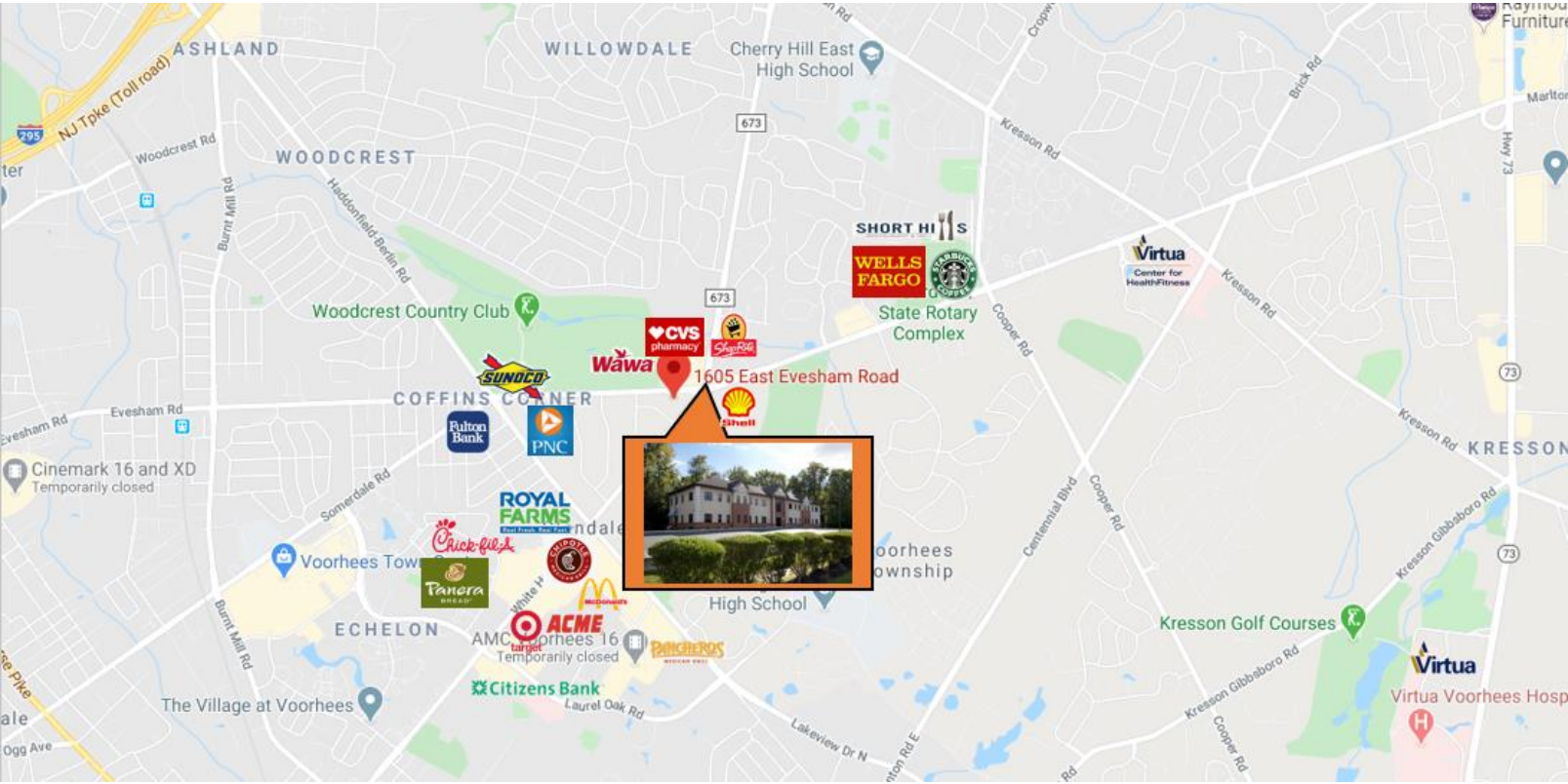
o 856.988.8880 c 856.669.9115
rick.schwartz@veritasrealestate.net

Annie Schwartz

o 856.988.8880 c 609-605-3675
annie@veritasrealestate.net

701 Route 73 North, Suite 4
Marlton, New Jersey 08053
www.veritasrealestate.net





- ✓ 20 minutes to Center City Philadelphia
- ✓ 20 minutes to PHL International Airport
- ✓ 30 minutes to Princeton, NJ
- ✓ 80 minutes to New York City



Rick Schwartz
 T: 856-988-8880 | C: 856-669-9115 | F: 856-988-8886
rick.schwartz@veritasrealestate.net



Annie Schwartz
 T: 856-988-8880 | C: 609-605-3675 | F: 856-988-8886
Annie@veritasrealestate.net

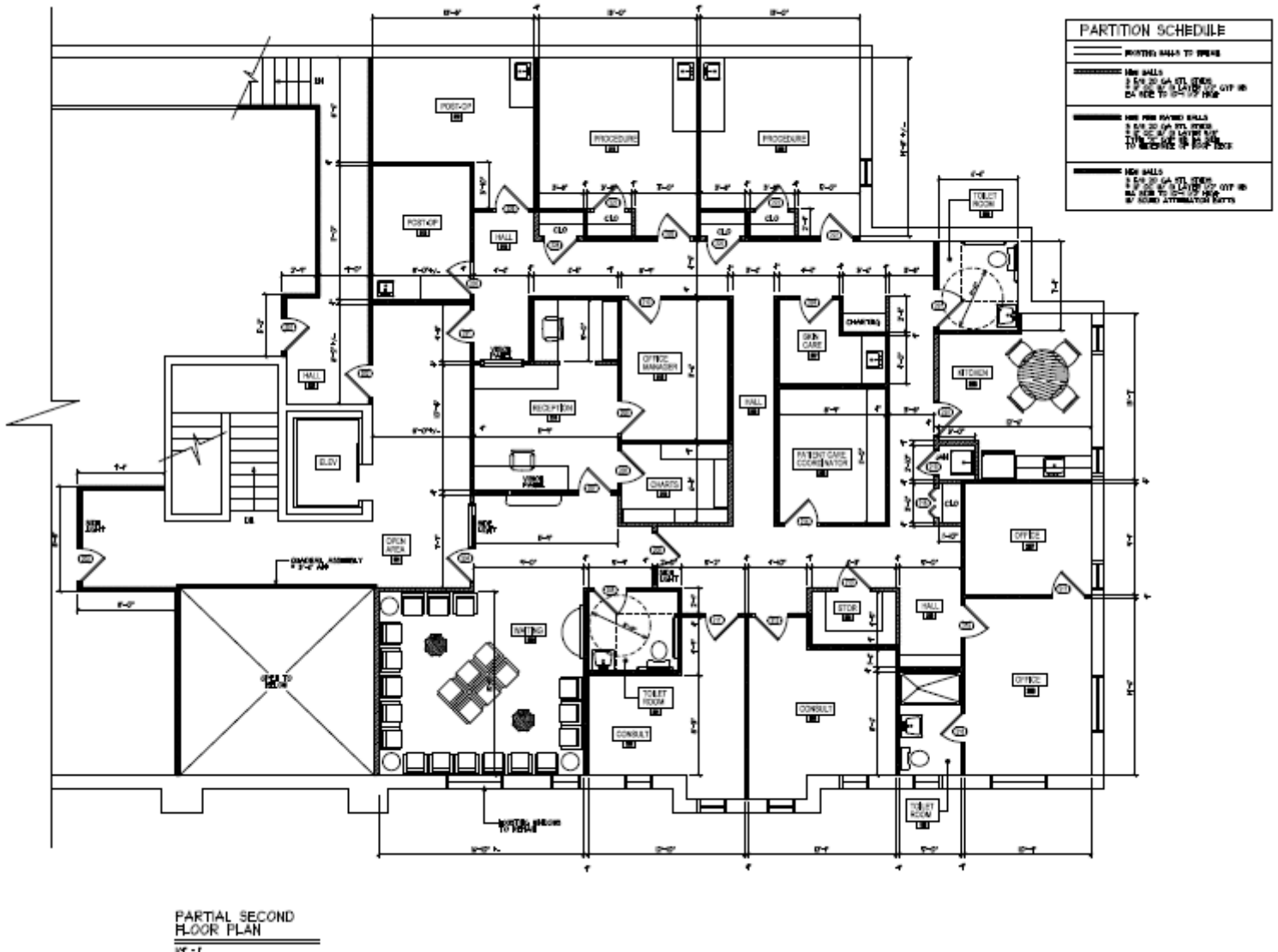


701 Route 73 North, Suite 4
 Marlton, New Jersey 08053
www.veritasrealestate.net

Floor Plan(s) Four Greentree



Suite 201 – 3,718 RSF



FOR MORE INFORMATION CONTACT:

Rick Schwartz

o 856.988.8880 c 856.669.9115

rick.schwartz@veritasrealestate.net

Annie Schwartz

o 856.988.8880 c 609-605-3675

annie@veritasrealestate.net