

PROFESSIONAL OFFICE  
**Evesham Medical**

1605 Evesham Road, Voorhees, NJ 08043

**FOR LEASE**  
**700 – 3,542 RSF**



Professional Office Available

**PROPERTY HIGHLIGHTS**

***\$18.00 - \$23.00/SF plus Electric***

**Lower Level:**

Suite 1: 700 RSF

**Second Floor – Medical:**

Suite 200: 3,542 RSF

- Class 'A' medical/professional space
- Turn-Key Condition with Great Finishes
- Building Monument Signage Available
- Located on the corner of Evesham and Springdale Road in Voorhees within walking distance to restaurants, banks, and pharmacy
- Minutes from Routes 70 and 73, I-295 and Virtua Hospital
- Amenities in immediate proximity including WaWa, Royal Farms, CVS, Wells Fargo Bank, Fulton Bank, and numerous restaurants

**FOR MORE INFORMATION CONTACT:**

**Rick Schwartz**

o 856.988.8880 c 856.669.9115  
[rick.schwartz@veritasrealestate.net](mailto:rick.schwartz@veritasrealestate.net)

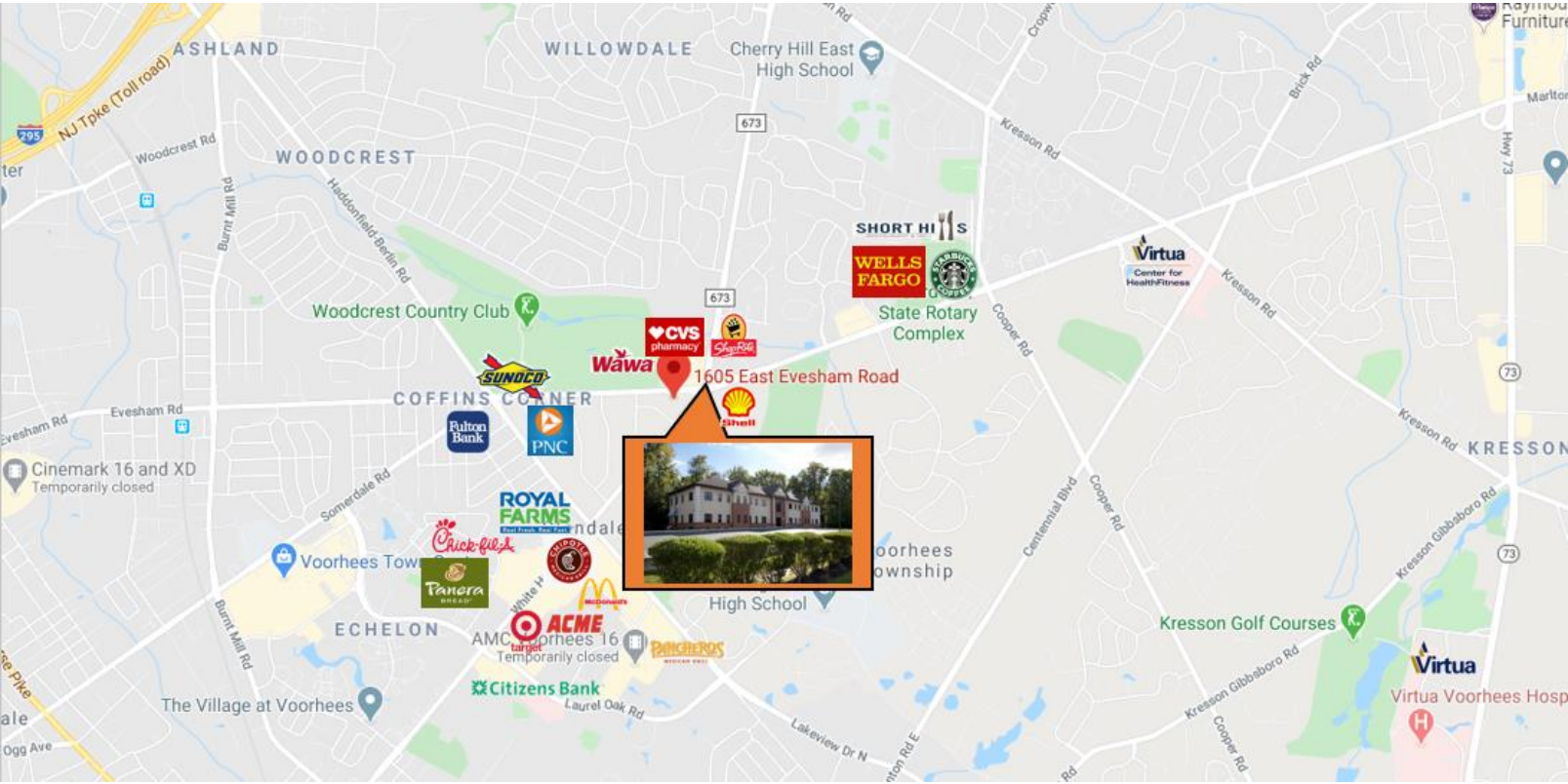
**Annie Schwartz**

o 856.988.8880 c 609-605-3675  
[annie@veritasrealestate.net](mailto:annie@veritasrealestate.net)

701 Route 73 North, Suite 4  
Marlton, New Jersey 08053  
[www.veritasrealestate.net](http://www.veritasrealestate.net)



Truth, Honesty and Integrity



- ✓ 20 minutes to Center City Philadelphia
- ✓ 20 minutes to PHL International Airport

- ✓ 30 minutes to Princeton, NJ
- ✓ 80 minutes to New York City



Rick Schwartz  
T: 856-988-8880 | C: 856-669-9115 | F: 856-988-8886  
rick.schwartz@veritasrealestate.net



Annie Schwartz  
T: 856-988-8880 | C: 609-605-3675 | F: 856-988-8886  
Annie@veritasrealestate.net



701 Route 73 North, Suite 4  
Marlton, New Jersey 08053  
[www.veritasrealestate.net](http://www.veritasrealestate.net)

# Floor Plan(s) Evesham Medical



## LL Suite 1 – 700 SF



**Floor Plan**  
Scale: 1/8" = 1'-0"

### FOR MORE INFORMATION CONTACT:

**Rick Schwartz**

o 856.988.8880 c 856.669.9115  
[rick.schwartz@veritasrealestate.net](mailto:rick.schwartz@veritasrealestate.net)

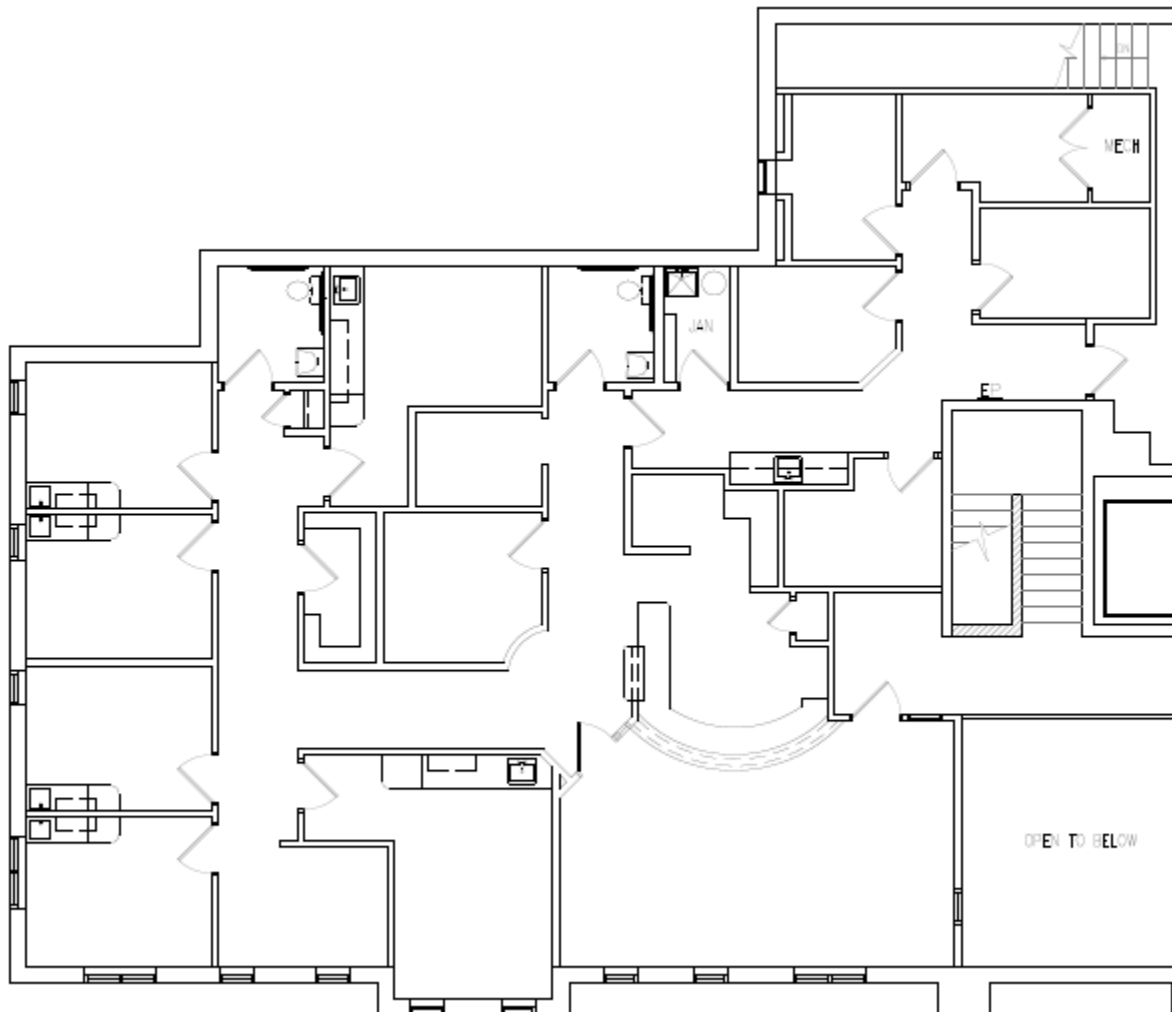
**Annie Schwartz**

o 856.988.8880 c 609-605-3675  
[annie@veritasrealestate.net](mailto:annie@veritasrealestate.net)

# Floor Plan(s) Evesham Medical



## Suite 200 – 3,542 SF



### FOR MORE INFORMATION CONTACT:

**Rick Schwartz**

o 856.988.8880 c 856.669.9115  
*rick.schwartz@veritasrealestate.net*

**Annie Schwartz**

o 856.988.8880 c 609-605-3675  
*annie@veritasrealestate.net*