

Greentree Commons

Atriums at Greentree

PROFESSIONAL & MEDICAL OFFICE

701 to 875 Route 73 North, Marlton, NJ 08053

FOR LEASE

1,100 RSF



Professional/Medical Office

\$19.00/SF plus Electric

Atriums at Greentree:

Fully Leased

Greentree Executive Commons:

851 Suite H: 1,100 RSF

PROPERTY HIGHLIGHTS

- Single story office space with private entrances
- Great location for professional office
- Excellent window lines
- Turn-Key Condition with Great Finishes
- Immediate access to Routes 73 and 70. Only 15 minutes to Center City with easy access to I-295 and NJ Turnpike.
- Amenities in immediate proximity including Whole Foods, WaWa, LA Fitness, Royal Farms, TD Bank, Wells Fargo Bank and numerous restaurants and hotels.

FOR MORE INFORMATION CONTACT:

Rick Schwartz

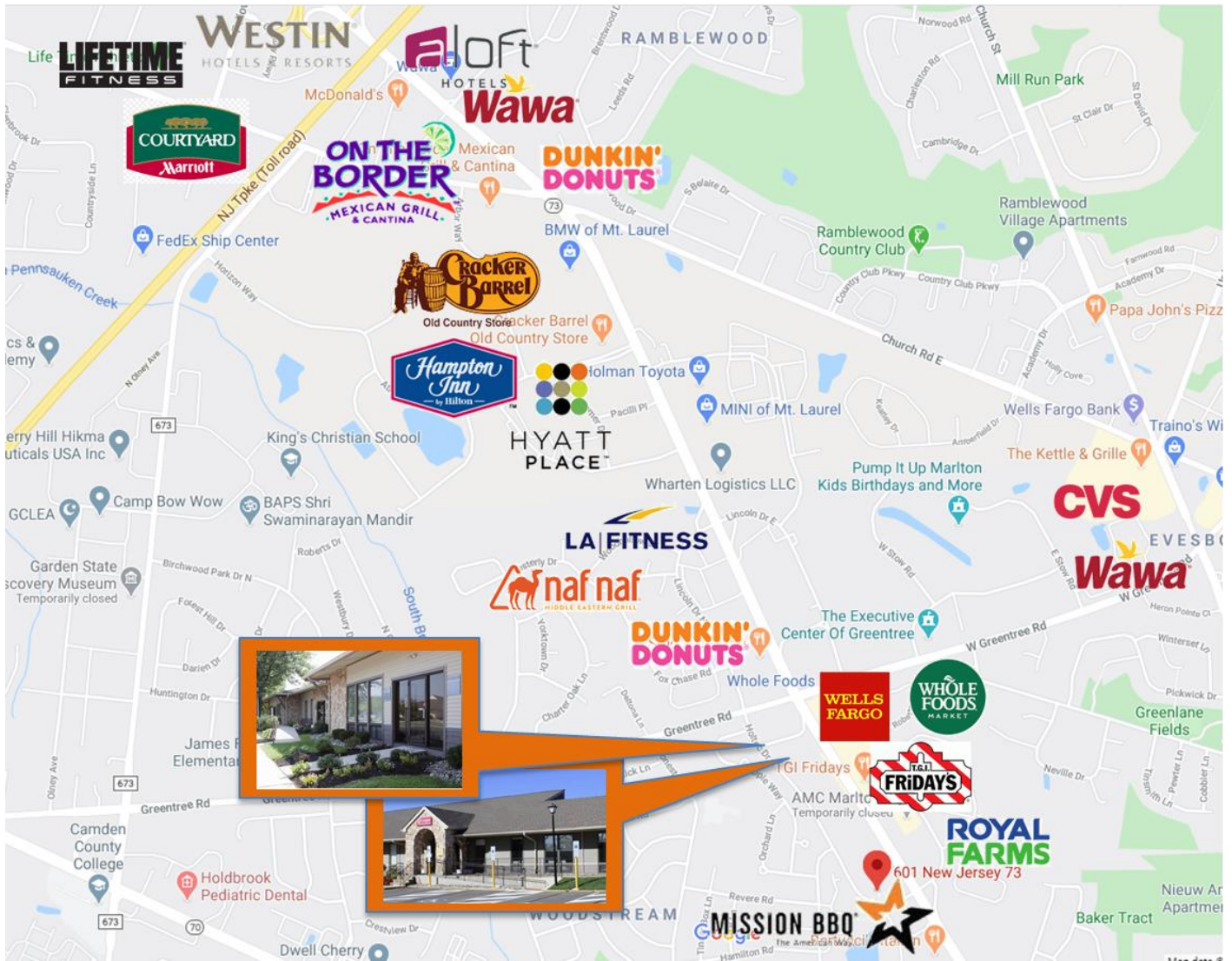
o 856.988.8880 c 856.669.9115
rick.schwartz@veritasrealestate.net

Annie Schwartz

o 856.988.8880 c 609-605-3675
annie@veritasrealestate.net

701 Route 73 North, Suite 4
Marlton, New Jersey 08053

www.veritasrealestate.net



Rick Schwartz

T: 856-988-8880 | C: 856-669-9115 | F: 856-988-8886

rick.schwartz@veritasrealestate.net



Annie Schwartz

T: 856-988-8880 | C: 609-605-3675 | F: 856-988-8886

Annie@veritasrealestate.net

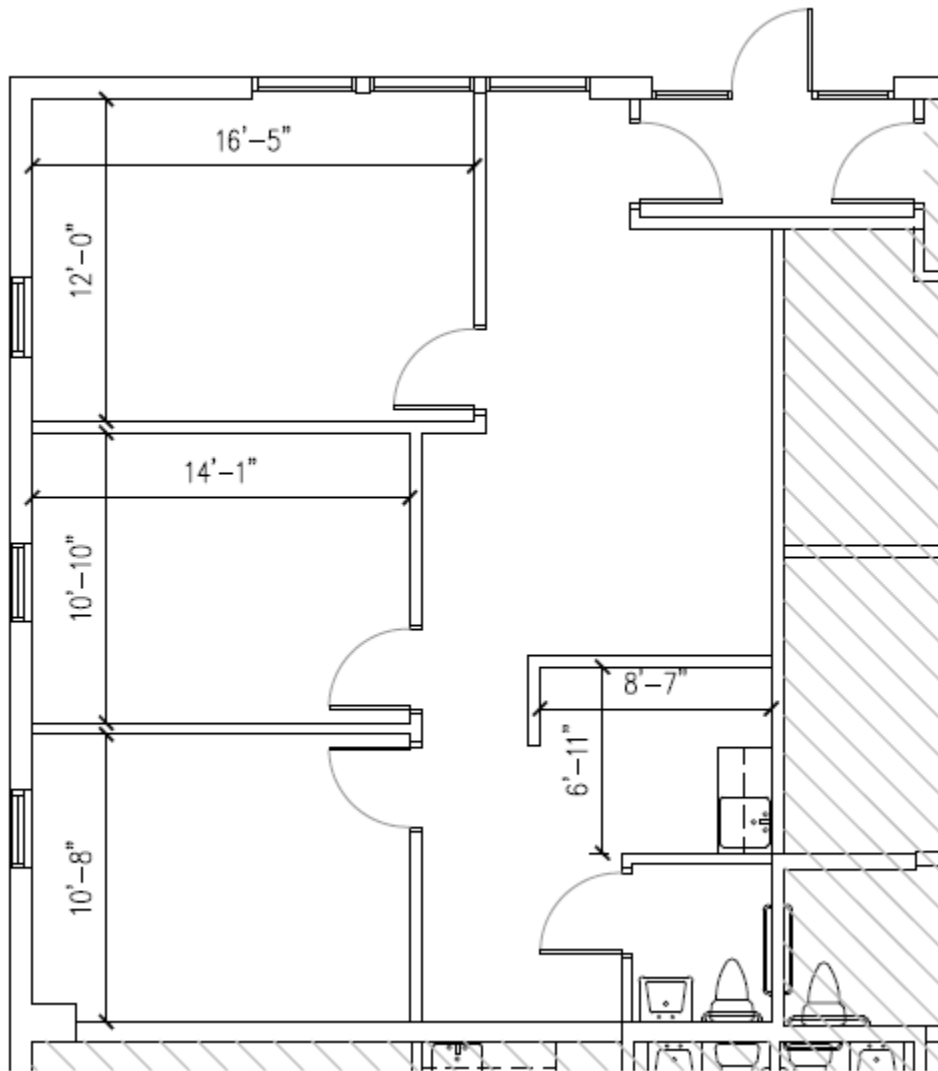


701 Route 73 North, Suite 4
Marlton, New Jersey 08053
www.veritasrealestate.net

Floor Plan(s) Greentree Executive Commons



851 Suite H – 1,100 RSF



FOR MORE INFORMATION CONTACT:

Rick Schwartz

o 856.988.8880 c 856.669.9115
rick.schwartz@veritasrealestate.net

Annie Schwartz

o 856.988.8880 c 609-605-3675
annie@veritasrealestate.net