

# Greentree Commons

## Atriums at Greentree

PROFESSIONAL & MEDICAL OFFICE

701 to 875 Route 73 North, Marlton, NJ 08053

# FOR LEASE

## 1,000 - 2,030 RSF



Professional/Medical Office

***\$20.00/SF plus Electric***

### Atriums at Greentree:

751 Suite 5: 2,030 RSF

### Greentree Executive Commons:

825 Suite I: 1,000 RSF

875 Suite A: 1,000 RSF

## PROPERTY HIGHLIGHTS

- Single story office space with private entrances
- Great location for professional office
- Excellent window lines
- Turn-Key Condition with Great Finishes
- Immediate access to Routes 73 and 70. Only 15 minutes to Center City with easy access to I-295 and NJ Turnpike.
- Amenities in immediate proximity including Whole Foods, WaWa, LA Fitness, Royal Farms, TD Bank, Wells Fargo Bank and numerous restaurants and hotels.

### FOR MORE INFORMATION CONTACT:

#### **Rick Schwartz**

o 856.988.8880 c 856.669.9115

[rick.schwartz@veritasrealestate.net](mailto:rick.schwartz@veritasrealestate.net)

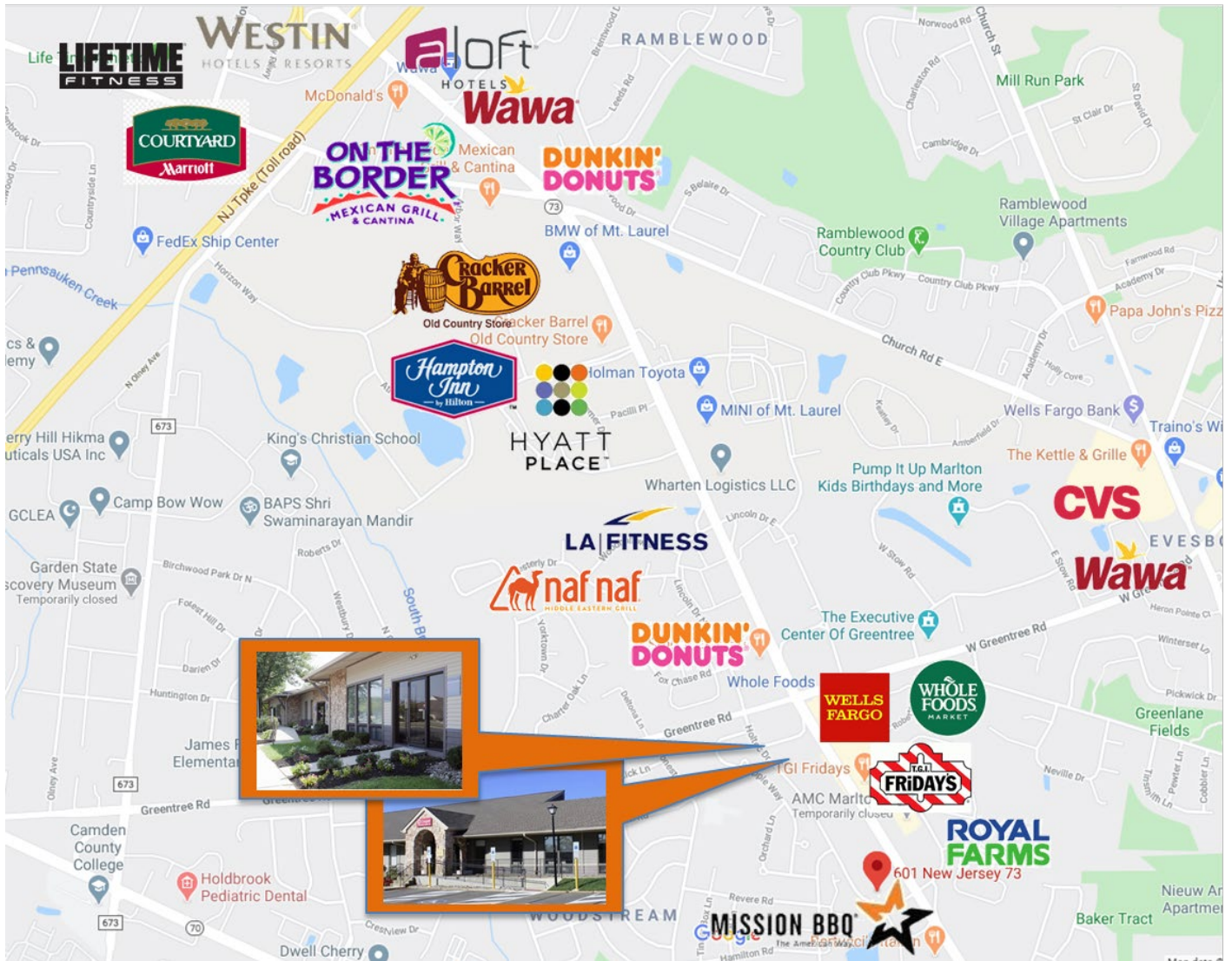
#### **Annie Schwartz**

o 856.988.8880 c 609-605-3675

[annie@veritasrealestate.net](mailto:annie@veritasrealestate.net)

701 Route 73 North, Suite 4  
Marlton, New Jersey 08053

[www.veritasrealestate.net](http://www.veritasrealestate.net)



**Rick Schwartz**

T: 856-988-8880 | C: 856-669-9115 | F: 856-988-8886

[rick.schwartz@veritasrealestate.net](mailto:rick.schwartz@veritasrealestate.net)



**Annie Schwartz**

T: 856-988-8880 | C: 609-605-3675 | F: 856-988-8886

[Annie@veritasrealestate.net](mailto:Annie@veritasrealestate.net)

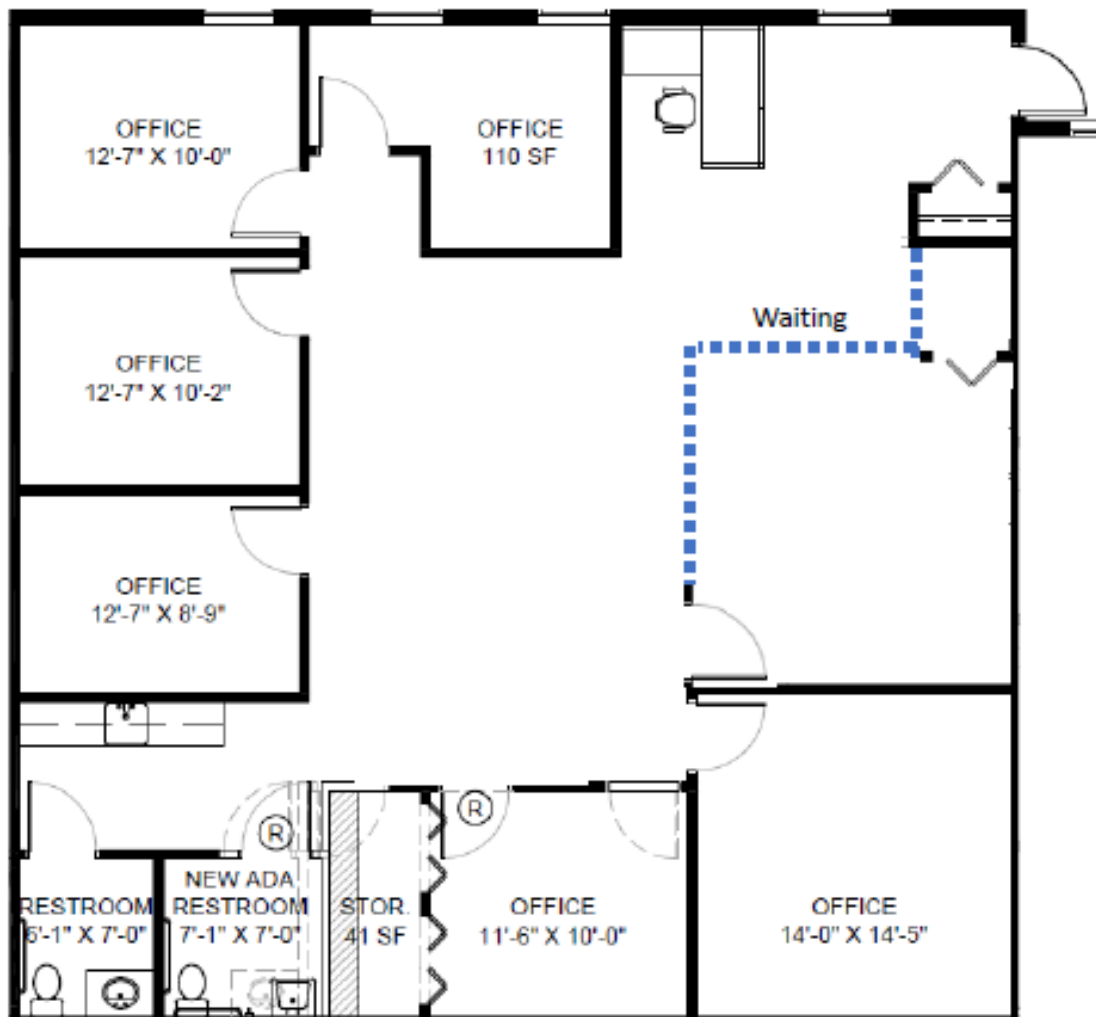


701 Route 73 North, Suite 4  
Marlton, New Jersey 08053  
[www.veritasrealestate.net](http://www.veritasrealestate.net)

# Floor Plan(s) Atriums at Greentree



## 751 Suite 5 – 2,030 RSF



### FOR MORE INFORMATION CONTACT:

**Rick Schwartz**

o 856.988.8880 c 856.669.9115  
[rick.schwartz@veritasrealestate.net](mailto:rick.schwartz@veritasrealestate.net)

**Annie Schwartz**

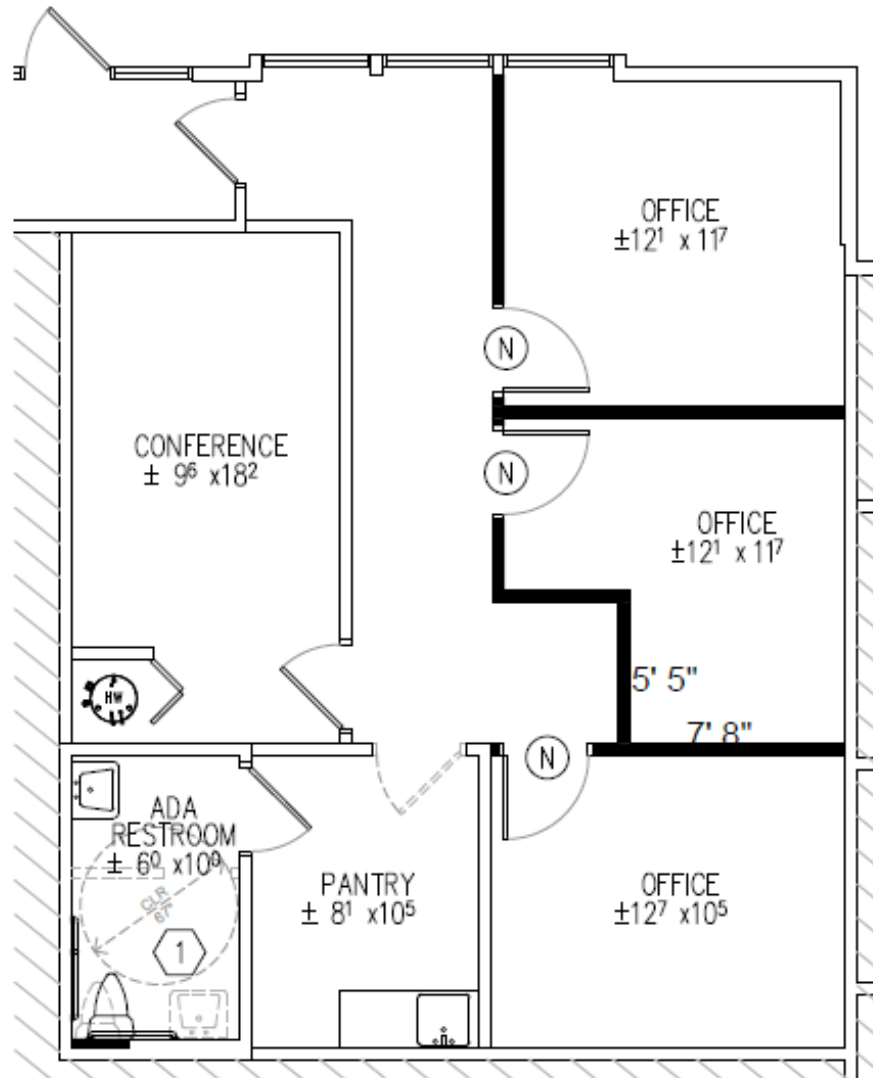
o 856.988.8880 c 609-605-3675  
[annie@veritasrealestate.net](mailto:annie@veritasrealestate.net)

# Floor Plan(s)

## Greentree Executive Commons



### 825 Suite I – 1,000 RSF



#### FOR MORE INFORMATION CONTACT:

**Rick Schwartz**

o 856.988.8880 c 856.669.9115  
[rick.schwartz@veritasrealestate.net](mailto:rick.schwartz@veritasrealestate.net)

**Annie Schwartz**

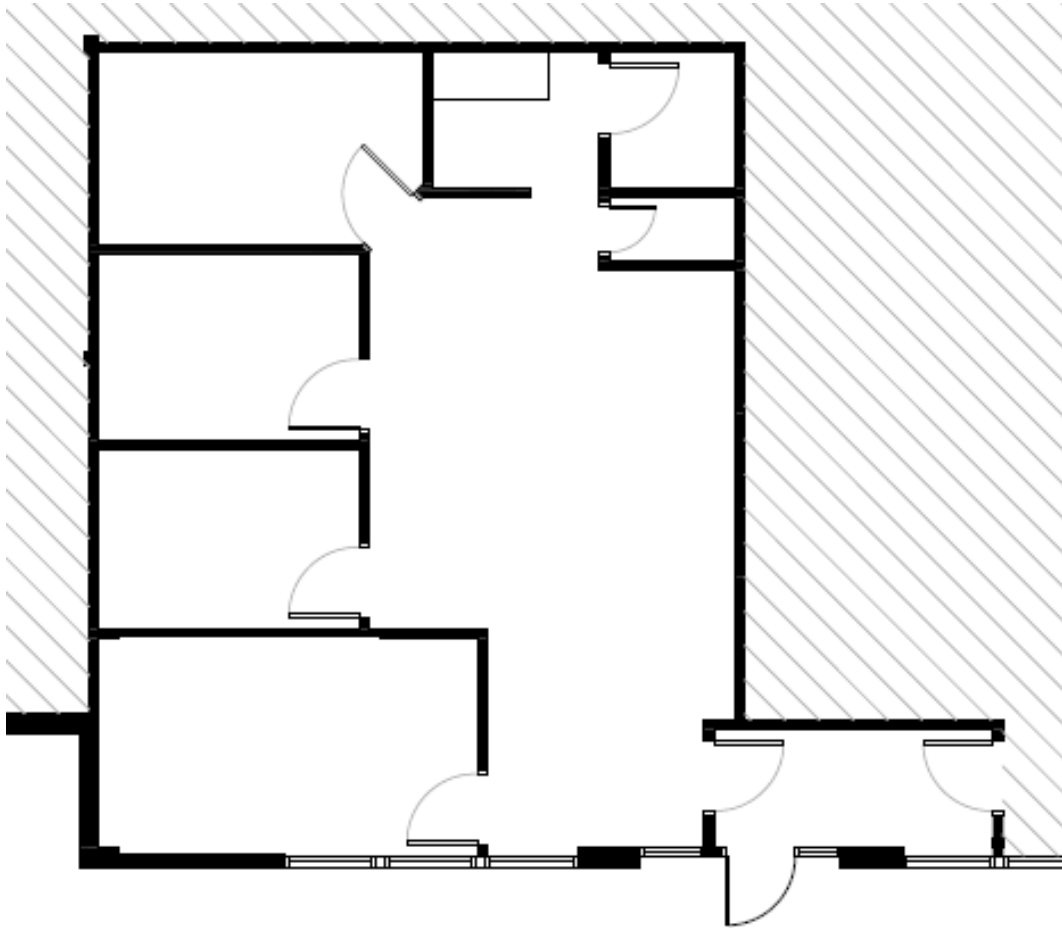
o 856.988.8880 c 609-605-3675  
[annie@veritasrealestate.net](mailto:annie@veritasrealestate.net)

# Floor Plan(s)

## Greentree Executive Commons



### 875 Suite A – 1,000 RSF



#### FOR MORE INFORMATION CONTACT:

**Rick Schwartz**

o 856.988.8880 c 856.669.9115  
[rick.schwartz@veritasrealestate.net](mailto:rick.schwartz@veritasrealestate.net)

**Annie Schwartz**

o 856.988.8880 c 609-605-3675  
[annie@veritasrealestate.net](mailto:annie@veritasrealestate.net)