

PROFESSIONAL OFFICE

# Plaza 73

1317 Route 73 Mount Laurel, NJ 08054

# FOR LEASE

## 1,189 RSF



Professional Office Available

**\$22.50/SF plus Electric**

Suite 100: 1,189 RSF

### FOR MORE INFORMATION CONTACT:

**Rick Schwartz**

o 856.988.8880 c 856.669.9115  
[rick.schwartz@veritasrealestate.net](mailto:rick.schwartz@veritasrealestate.net)

**Annie Schwartz**

o 856.988.8880 c 609-605-3675  
[annie@veritasrealestate.net](mailto:annie@veritasrealestate.net)

### PROPERTY HIGHLIGHTS

**\$21.00/SF plus Electric**

- Interior and Exterior Renovations Commencing October 2022.
- Class 'A' office space
- Great location for professional office
- Excellent window lines
- Immediate access to Routes 73 and 70. Only 15 minutes to Center City with easy access to I-295 and NJ Turnpike.
- Amenities in immediate proximity including Whole Foods, WaWa, LA Fitness and numerous restaurants, banks and hotels.



Truth, Honesty and Integrity

1930 Route 70 East, Bldg. Q  
Marlton, New Jersey 08053  
[www.veritasrealestate.net](http://www.veritasrealestate.net)



- ✓ 15 minutes to Center City Philadelphia
- ✓ 25 minutes to PHL International Airport

- ✓ 30 minutes to Princeton, NJ
- ✓ 80 minutes to New York City



Rick Schwartz

T: 856-988-8880 | C: 856-669-9115 | F: 856-988-8886  
rick.schwartz@veritasrealestate.net



Annie Schwartz

T: 856-988-8880 | C: 609-605-3675 | F: 856-988-8886  
Annie@veritasrealestate.net

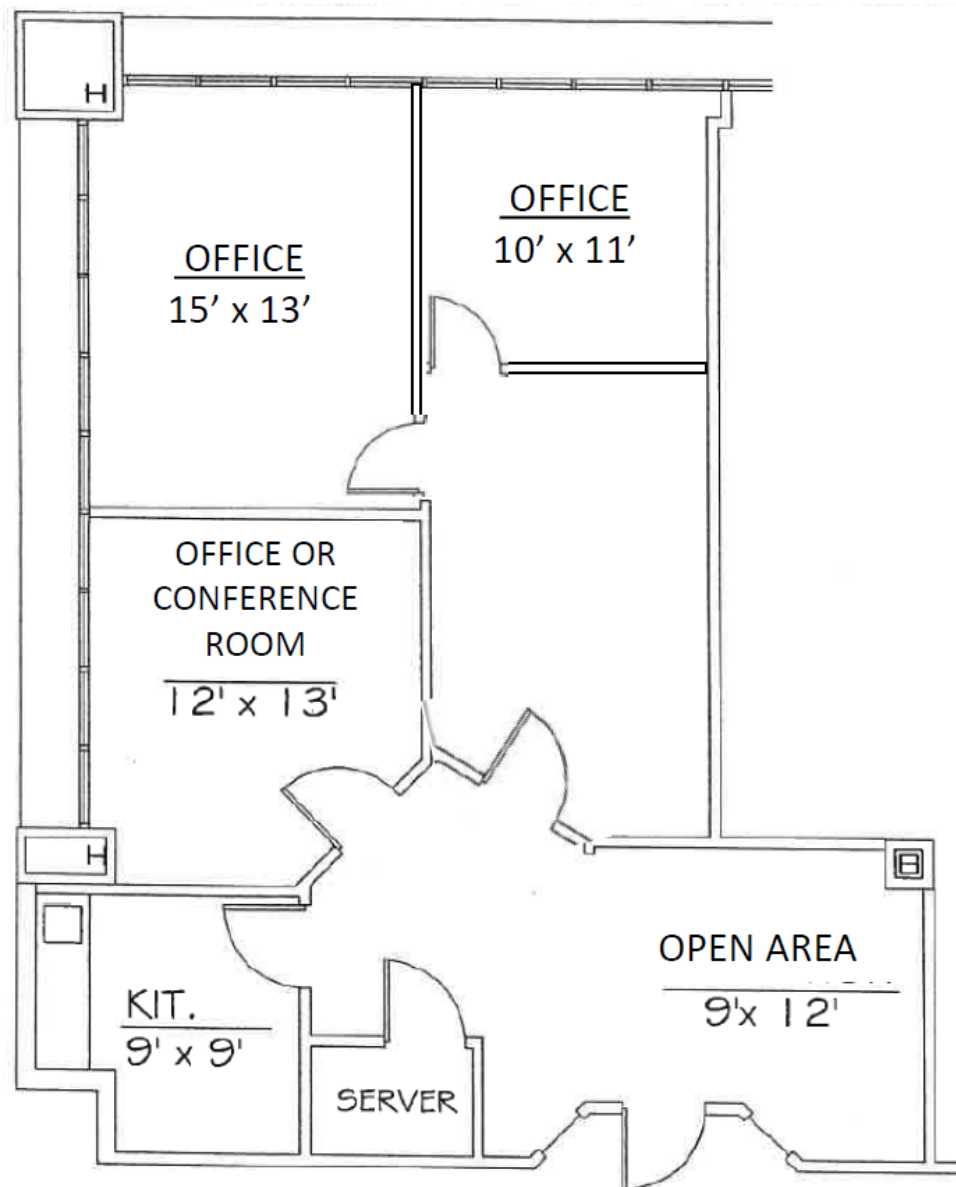


701 Route 73 North, Suite 4  
Marlton, New Jersey 08053  
[www.veritasrealestate.net](http://www.veritasrealestate.net)

# Floor Plan(s) 1317 Route 73



## Suite 100 – 1,189 RSF



### FOR MORE INFORMATION CONTACT:

#### **Rick Schwartz**

o 856.988.8880 c 856.669.9115  
[rick.schwartz@veritasrealestate.net](mailto:rick.schwartz@veritasrealestate.net)

#### **Annie Schwartz**

o 856.988.8880 c 609-605-3675  
[annie@veritasrealestate.net](mailto:annie@veritasrealestate.net)