

PROFESSIONAL OFFICE

Plaza 73

1317 Route 73 Mount Laurel, NJ 08054

FOR LEASE

2,139 – 4,800 RSF



***Completely Renovated
Interior and Exterior Q4 2022***

Professional Office Available

\$21.00/SF plus Electric

Suite 101: 4,800 RSF

FOR MORE INFORMATION CONTACT:

Rick Schwartz

o 856.988.8880 c 856.669.9115
rick.schwartz@veritasrealestate.net

Annie Schwartz

o 856.988.8880 c 609-605-3675
annie@veritasrealestate.net

PROPERTY HIGHLIGHTS

\$21.00/SF plus Electric

- Interior and Exterior Renovations Commencing October 2022.
- Class 'A' office space
- Great location for professional office
- Excellent window lines
- Immediate access to Routes 73 and 70. Only 15 minutes to Center City with easy access to I-295 and NJ Turnpike.
- Amenities in immediate proximity including Whole Foods, WaWa, LA Fitness and numerous restaurants, banks and hotels.



Truth, Honesty and Integrity

1930 Route 70 East, Bldg. Q
Marlton, New Jersey 08053
www.veritasrealestate.net



- ✓ 15 minutes to Center City Philadelphia
- ✓ 25 minutes to PHL International Airport

- ✓ 30 minutes to Princeton, NJ
- ✓ 80 minutes to New York City



Rick Schwartz

T: 856-988-8880 | C: 856-669-9115 | F: 856-988-8886
 rick.schwartz@veritasrealestate.net



Annie Schwartz

T: 856-988-8880 | C: 609-605-3675 | F: 856-988-8886
 Annie@veritasrealestate.net

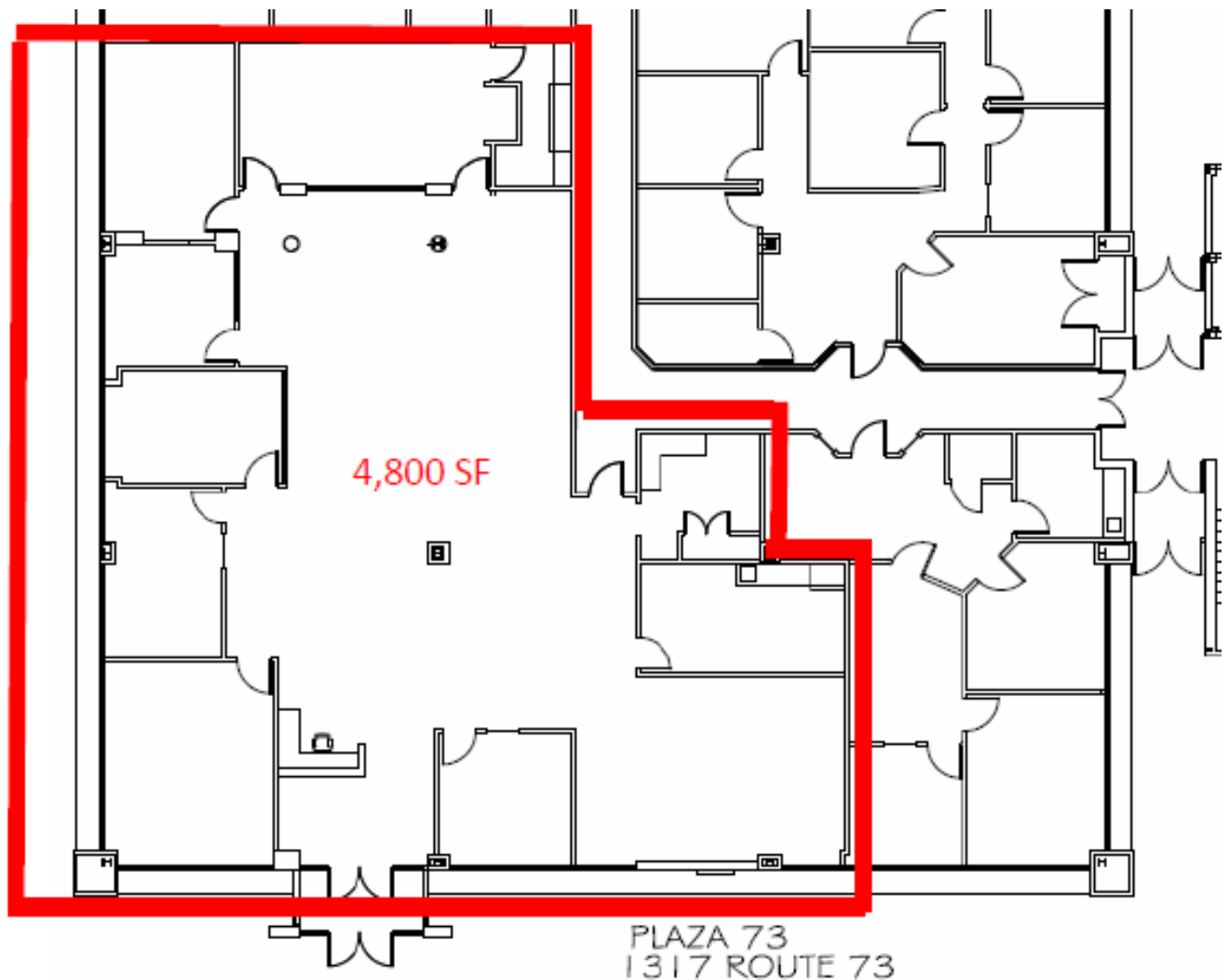


701 Route 73 North, Suite 4
 Marlton, New Jersey 08053
www.veritasrealestate.net

Floor Plan(s) 1317 Route 73



Suite 3,300 to 9,200 RSF



Private Entrance

FOR MORE INFORMATION CONTACT:

Rick Schwartz

o 856.988.8880 c 856.669.9115
rick.schwartz@veritasrealestate.net

Annie Schwartz

o 856.988.8880 c 609-605-3675
annie@veritasrealestate.net