

# Cherry Hill Executive Mews

## FOR LEASE

PROFESSIONAL & MEDICAL OFFICE

612 RSF

1930 East Marlton Pike, Cherry Hill, NJ 08003



### Professional/Medical Office

**\$18.50/SF plus Electric**

Suite C16:

612 RSF

*\*floor plan attached\**

### PROPERTY HIGHLIGHTS

- Single story office space with private entrances
- Great location for professional office
- Excellent window lines
- Turn-Key Condition with Great Finishes
- Immediate access to Routes 70. Only 15 minutes to Center City with easy access to I-295, NJ Turnpike, and Route 73
- Amenities in immediate proximity including WaWa, multiple banks, and many restaurants.

### FOR MORE INFORMATION CONTACT:

**Rick Schwartz**

o 856.988.8880 c 856.669.9115  
[rick.schwartz@veritasrealestate.net](mailto:rick.schwartz@veritasrealestate.net)

**Annie Schwartz**

o 856.988.8880 c 609-605-3675  
[annie@veritasrealestate.net](mailto:annie@veritasrealestate.net)

701 Route 73 North, Suite 4  
Marlton, New Jersey 08053

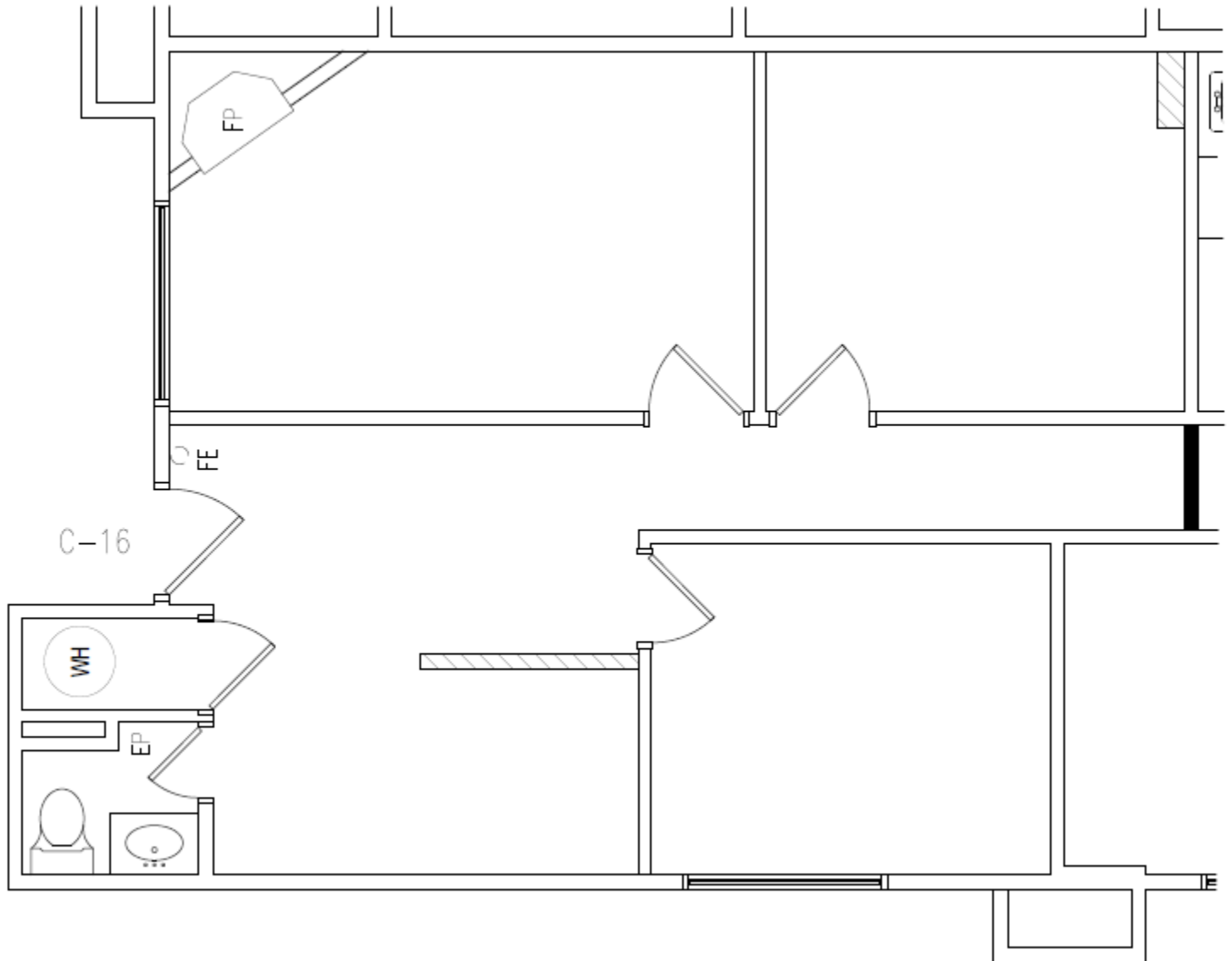
[www.veritasrealestate.net](http://www.veritasrealestate.net)

# Floor Plan(s)

## CherryHill Executive Mews



### Suite C16 – 612 RSF



#### FOR MORE INFORMATION CONTACT:

**Rick Schwartz**

o 856.988.8880 c 856.669.9115  
[rick.schwartz@veritasrealestate.net](mailto:rick.schwartz@veritasrealestate.net)

**Annie Schwartz**

o 856.988.8880 c 609-605-3675  
[annie@veritasrealestate.net](mailto:annie@veritasrealestate.net)