

Cherry Hill Executive Mews

FOR LEASE

PROFESSIONAL & MEDICAL OFFICE

907 – 1,313 RSF

1930 East Marlton Pike, Cherry Hill, NJ 08003



Professional/Medical Office

\$18.50/SF plus Electric

Suite L-61: 907 RSF
Suite W-109: 1,390 RSF

see attached floor plan(s)

PROPERTY HIGHLIGHTS

- Single story office space with private entrances
- Great location for professional office
- Excellent window lines
- Turn-Key Condition with Great Finishes
- Immediate access to Routes 70. Only 15 minutes to Center City with easy access to I-295, NJ Turnpike, and Route 73
- Amenities in immediate proximity including WaWa, multiple banks, and many restaurants.

FOR MORE INFORMATION CONTACT:

Rick Schwartz

o 856.988.8880 c 856.669.9115
rick.schwartz@veritasrealestate.net

Annie Schwartz

o 856.988.8880 c 609-605-3675
annie@veritasrealestate.net

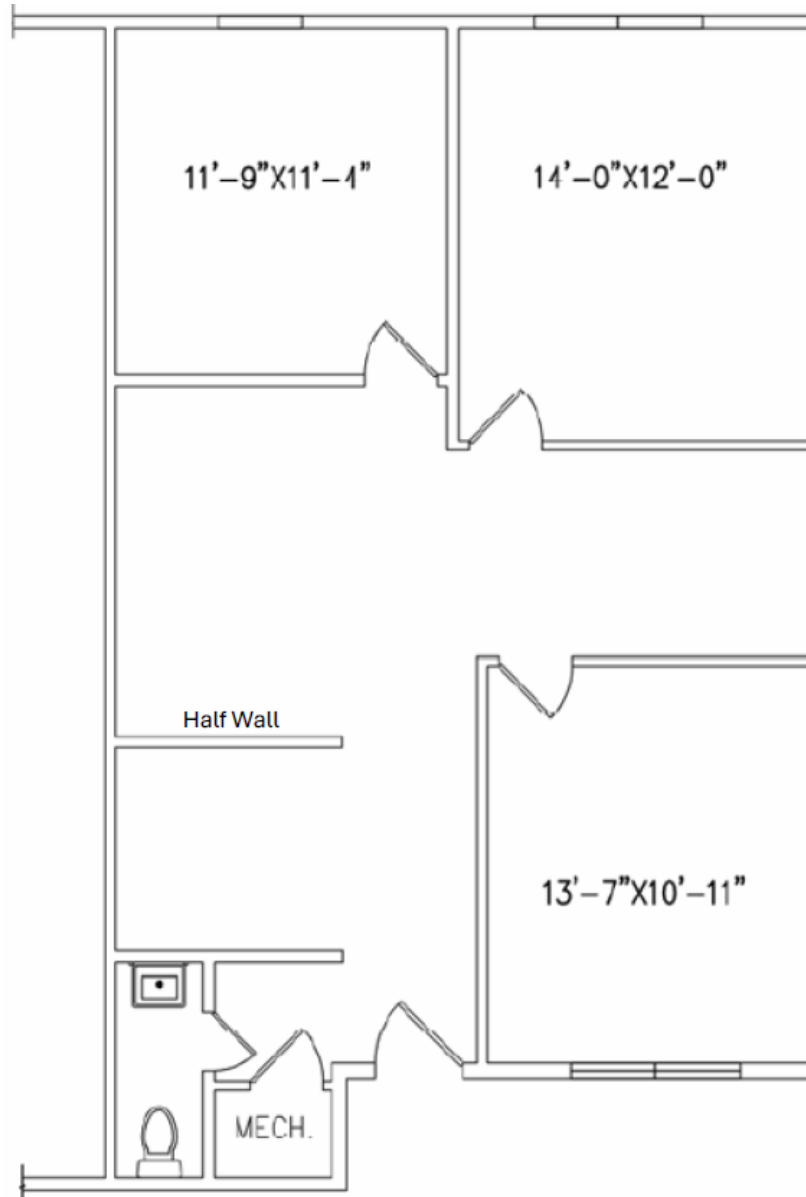
701 Route 73 North, Suite 4
Marlton, New Jersey 08053

Floor Plan(s)

Cherry Hill Executive Mews



Suite L61– 907 RSF



FOR MORE INFORMATION CONTACT:

Rick Schwartz

o 856.988.8880 c 856.669.9115
rick.schwartz@veritasrealestate.net

Annie Schwartz

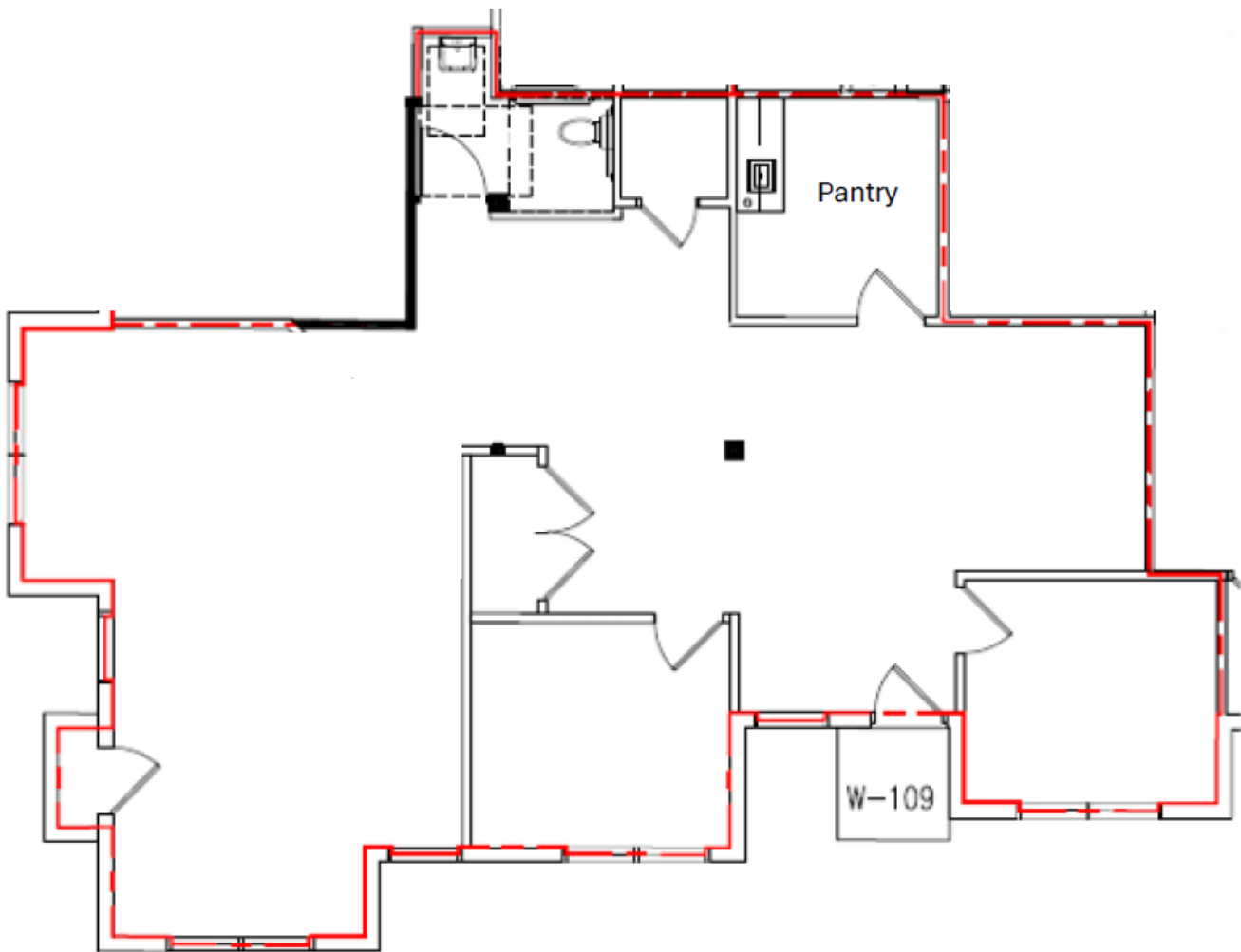
o 856.988.8880 c 609-605-3675
annie@veritasrealestate.net

Floor Plan(s)

Cherry Hill Executive Mews



Suite W109– 1,390 RSF as built



FOR MORE INFORMATION CONTACT:

Rick Schwartz

o 856.988.8880 c 856.669.9115
rick.schwartz@veritasrealestate.net

Annie Schwartz

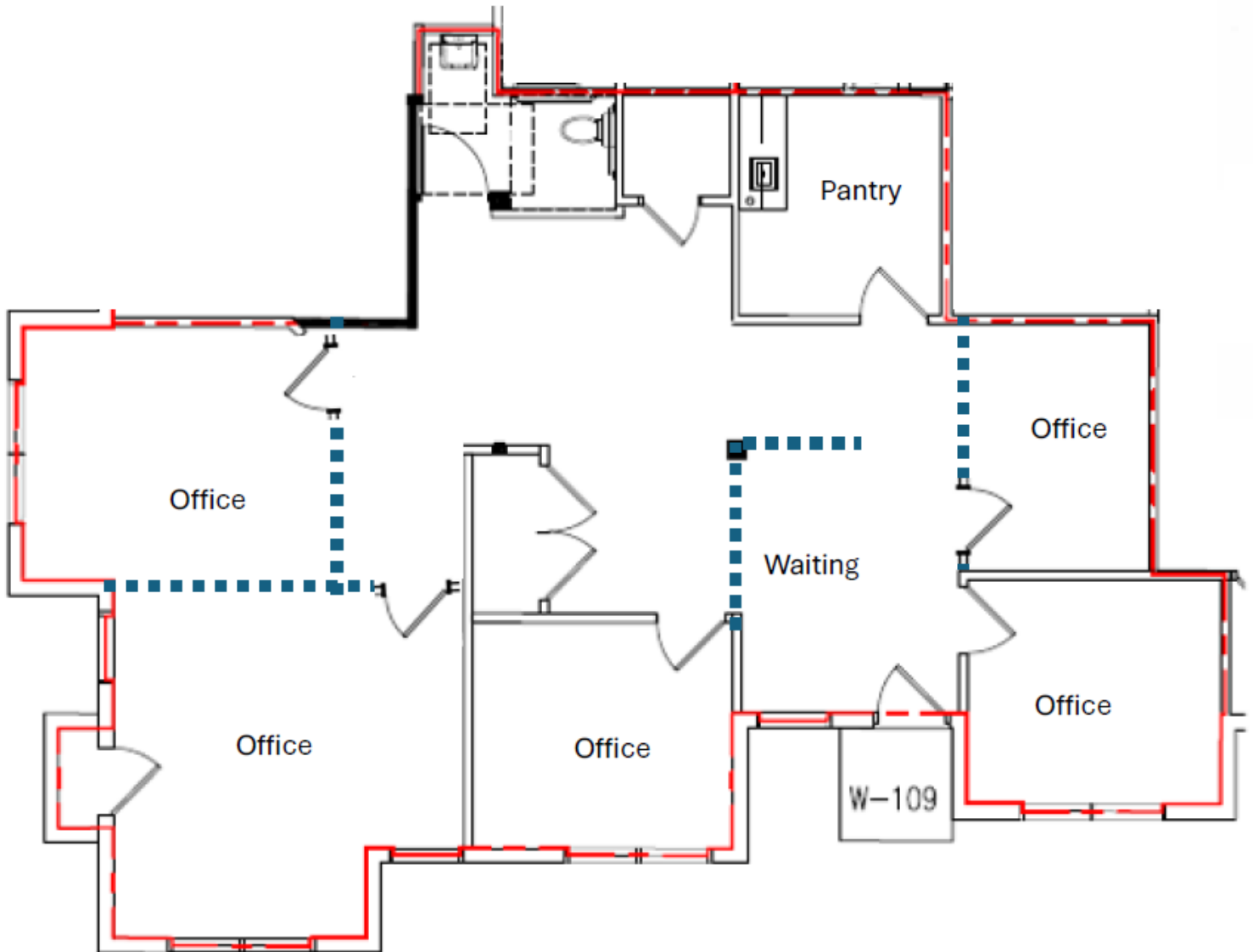
o 856.988.8880 c 609-605-3675
annie@veritasrealestate.net

Floor Plan(s)

Cherry Hill Executive Mews



Suite W109– 1,390 RSF with 5 offices



FOR MORE INFORMATION CONTACT:

Rick Schwartz

o 856.988.8880 c 856.669.9115
rick.schwartz@veritasrealestate.net

Annie Schwartz

o 856.988.8880 c 609-605-3675
annie@veritasrealestate.net