

# Cherry Hill Executive Mews

## FOR LEASE

PROFESSIONAL & MEDICAL OFFICE

852 – 1,200 RSF

1930 East Marlton Pike, Cherry Hill, NJ 08003



Professional/Medical Office

**\$18.00/SF plus Electric**

Suite D – 19:	852 RSF
Suite H – 41:	1,058 RSF
Suite H – 43:	1,175 RSF
Suite M – 64:	1,107 RSF
Suite M – 69:	1,200 RSF

\*see floor plans attached\*

## PROPERTY HIGHLIGHTS

- Single story office space with private entrances
- Great location for professional office
- Excellent window lines
- Turn-Key Condition with Great Finishes
- Immediate access to Routes 70. Only 15 minutes to Center City with easy access to I-295, NJ Turnpike, and Route 73
- Amenities in immediate proximity including WaWa, multiple banks, and many restaurants.

### FOR MORE INFORMATION CONTACT:

**Rick Schwartz**

o 856.988.8880 c 856.669.9115  
[rick.schwartz@veritasrealestate.net](mailto:rick.schwartz@veritasrealestate.net)

**Annie Schwartz**

o 856.988.8880 c 609-605-3675  
[annie@veritasrealestate.net](mailto:annie@veritasrealestate.net)



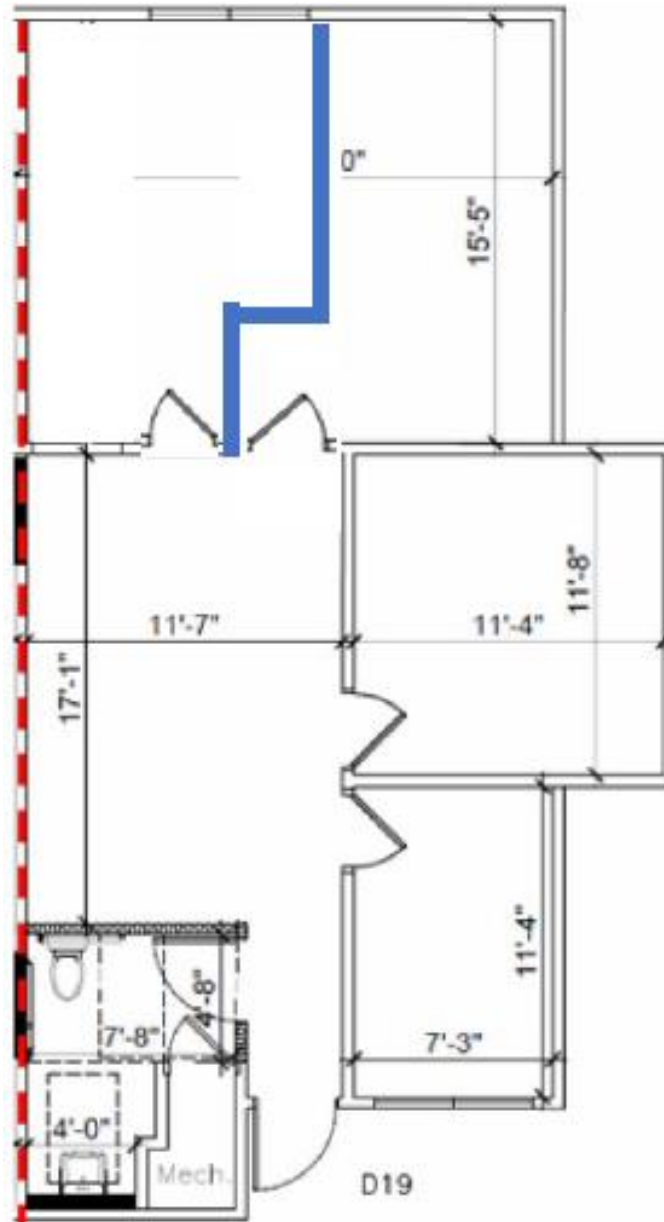
701 Route 73 North, Suite 4  
Marlton, New Jersey 08053

[www.veritasrealestate.net](http://www.veritasrealestate.net)

# Floor Plan(s) Cherry Hill Executive Mews



## Suite D-19 – 850 RSF



### FOR MORE INFORMATION CONTACT:

#### **Rick Schwartz**

o 856.988.8880 c 856.669.9115  
[rick.schwartz@veritasrealestate.net](mailto:rick.schwartz@veritasrealestate.net)

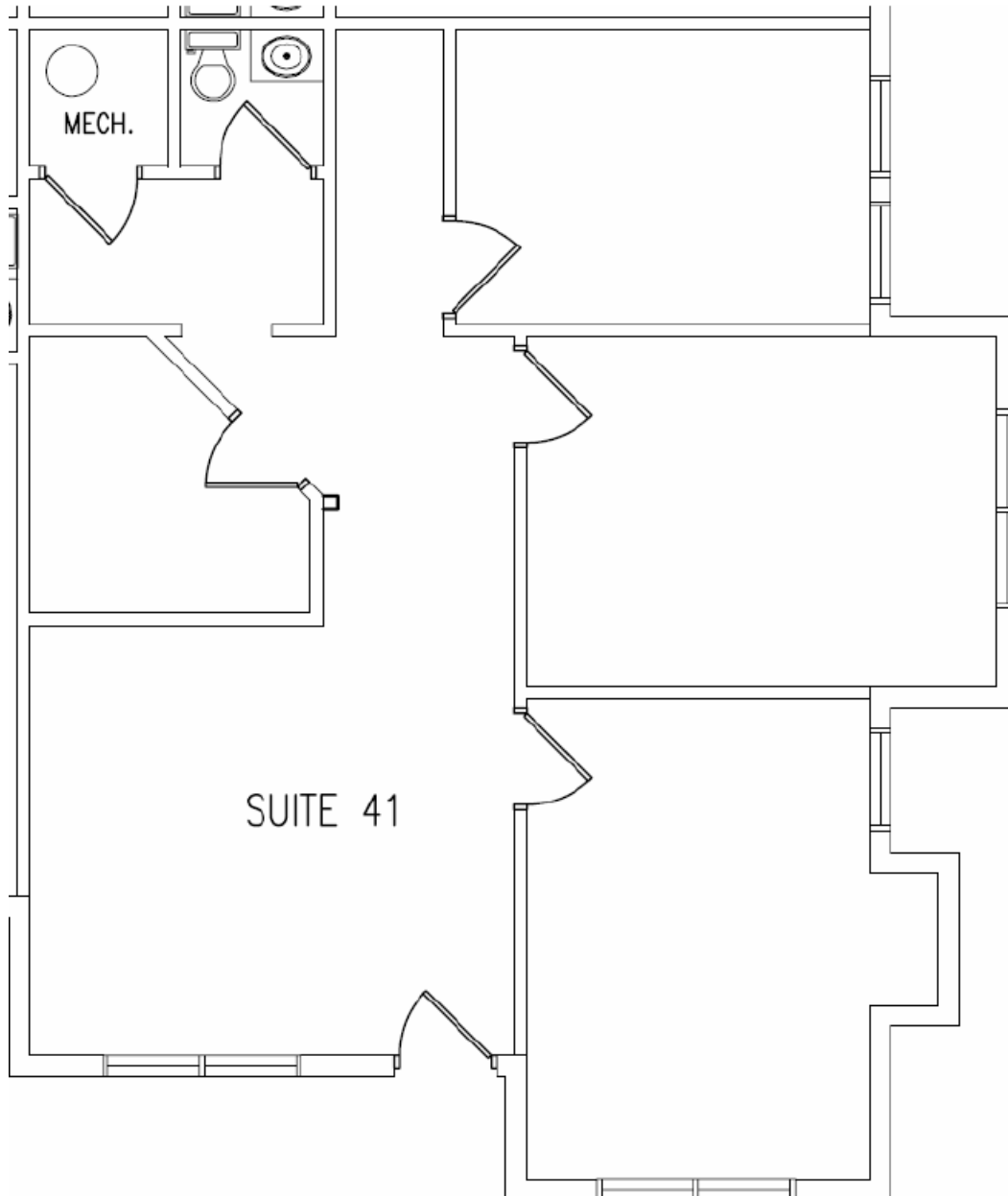
#### **Annie Schwartz**

o 856.988.8880 c 609-605-3675  
[annie@veritasrealestate.net](mailto:annie@veritasrealestate.net)

# Floor Plan(s) Cherry Hill Executive Mews



## Suite H-41 – 1,058 RSF



### FOR MORE INFORMATION CONTACT:

#### **Rick Schwartz**

o 856.988.8880 c 856.669.9115  
[rick.schwartz@veritasrealestate.net](mailto:rick.schwartz@veritasrealestate.net)

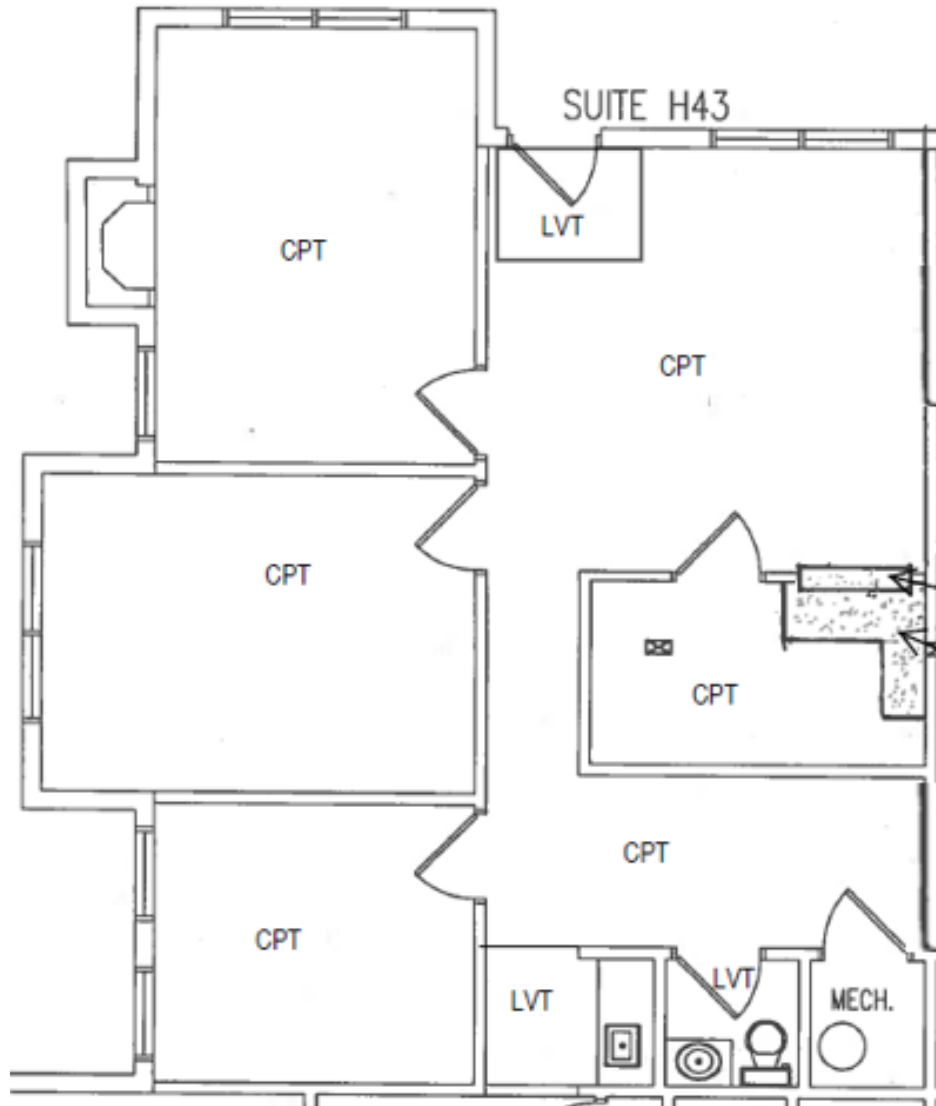
#### **Annie Schwartz**

o 856.988.8880 c 609-605-3675  
[annie@veritasrealestate.net](mailto:annie@veritasrealestate.net)

# Floor Plan(s) Cherry Hill Executive Mews



## Suite H-43 – 1,175 RSF



### FOR MORE INFORMATION CONTACT:

#### **Rick Schwartz**

o 856.988.8880 c 856.669.9115  
[rick.schwartz@veritasrealestate.net](mailto:rick.schwartz@veritasrealestate.net)

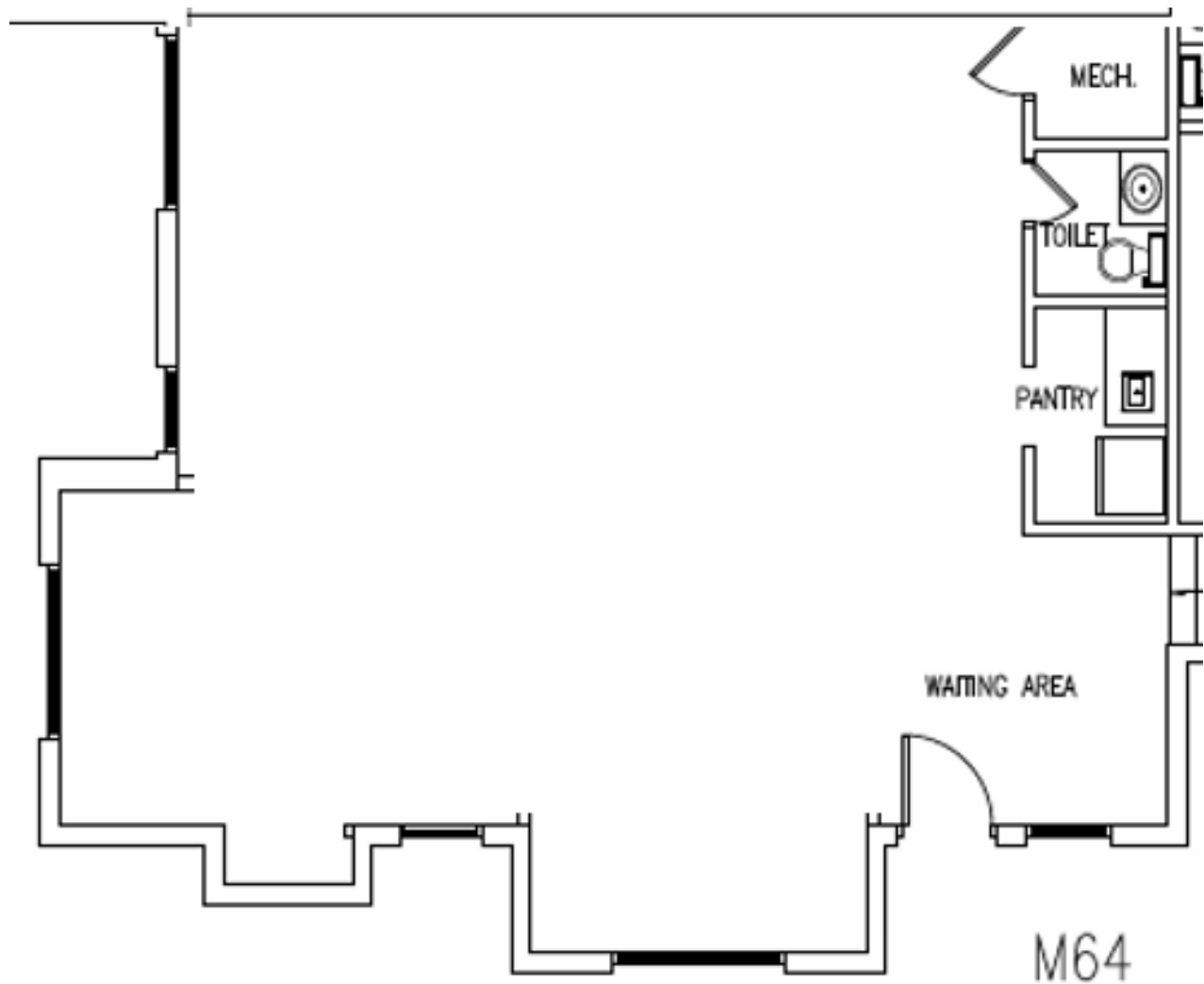
#### **Annie Schwartz**

o 856.988.8880 c 609-605-3675  
[annie@veritasrealestate.net](mailto:annie@veritasrealestate.net)

# Floor Plan(s) Cherry Hill Executive Mews



## Suite M-64 – 1,107 RSF



### FOR MORE INFORMATION CONTACT:

#### **Rick Schwartz**

o 856.988.8880 c 856.669.9115  
[rick.schwartz@veritasrealestate.net](mailto:rick.schwartz@veritasrealestate.net)

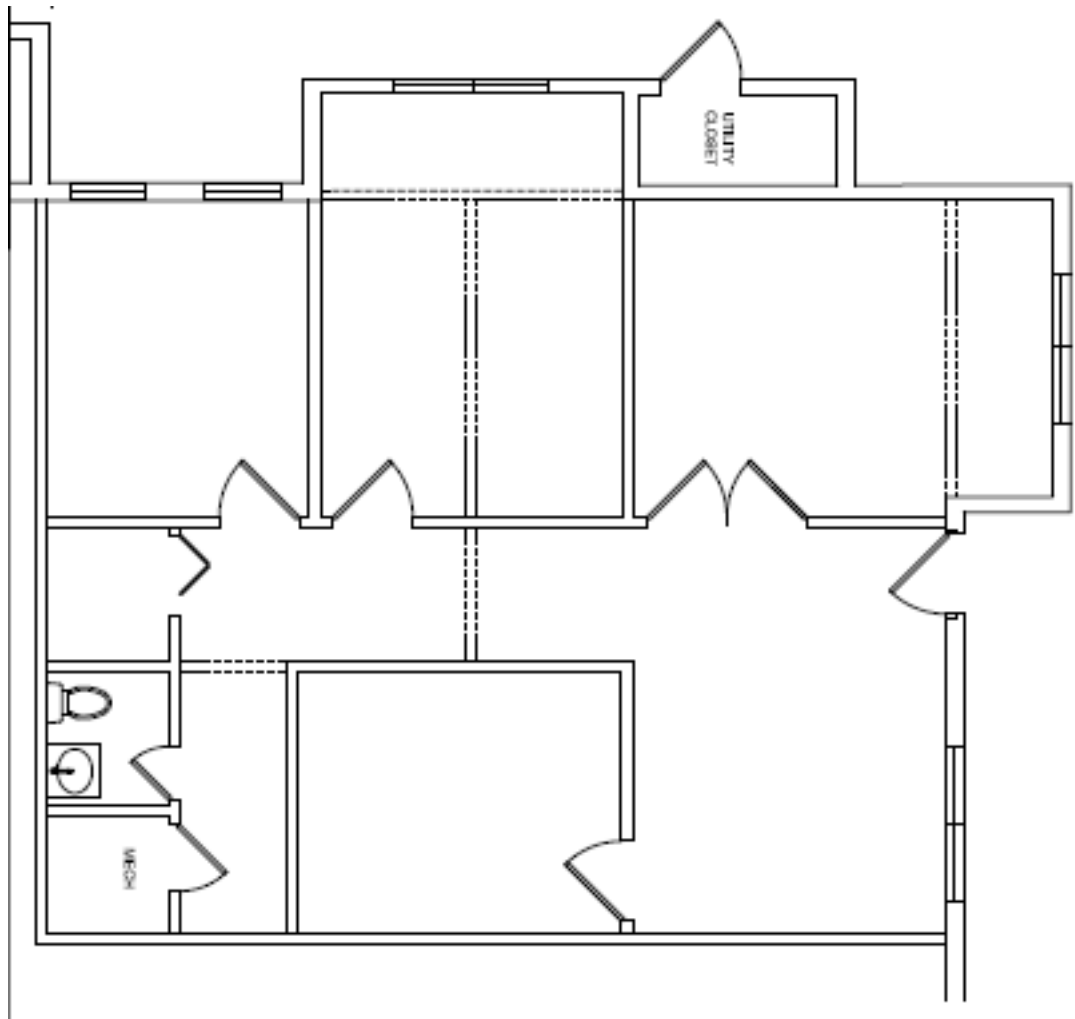
#### **Annie Schwartz**

o 856.988.8880 c 609-605-3675  
[annie@veritasrealestate.net](mailto:annie@veritasrealestate.net)

# Floor Plan(s) Cherry Hill Executive Mews



## Suite M – 69: 1,200 RSF



### FOR MORE INFORMATION CONTACT:

#### **Rick Schwartz**

o 856.988.8880 c 856.669.9115  
[rick.schwartz@veritasrealestate.net](mailto:rick.schwartz@veritasrealestate.net)

#### **Annie Schwartz**

o 856.988.8880 c 609-605-3675  
[annie@veritasrealestate.net](mailto:annie@veritasrealestate.net)