

Cherry Hill Executive Mews

FOR LEASE

PROFESSIONAL & MEDICAL OFFICE

700 – 1,718 RSF

1930 East Marlton Pike, Cherry Hill, NJ 08003



Professional/Medical Office

\$18.00/SF plus Electric

Suite D - 20:	798 SF
Suite H - 41:	1,058 SF
Suite W- 111:	1,718 SF

see floor plans attached

PROPERTY HIGHLIGHTS

- Single story office space with private entrances
- Great location for professional office
- Excellent window lines
- Turn-Key Condition with Great Finishes
- Immediate access to Routes 70. Only 15 minutes to Center City with easy access to I-295, NJ Turnpike, and Route 73
- Amenities in immediate proximity including WaWa, multiple banks, and many restaurants.

FOR MORE INFORMATION CONTACT:

Rick Schwartz

o 856.988.8880 c 856.669.9115
rick.schwartz@veritasrealestate.net

Annie Schwartz

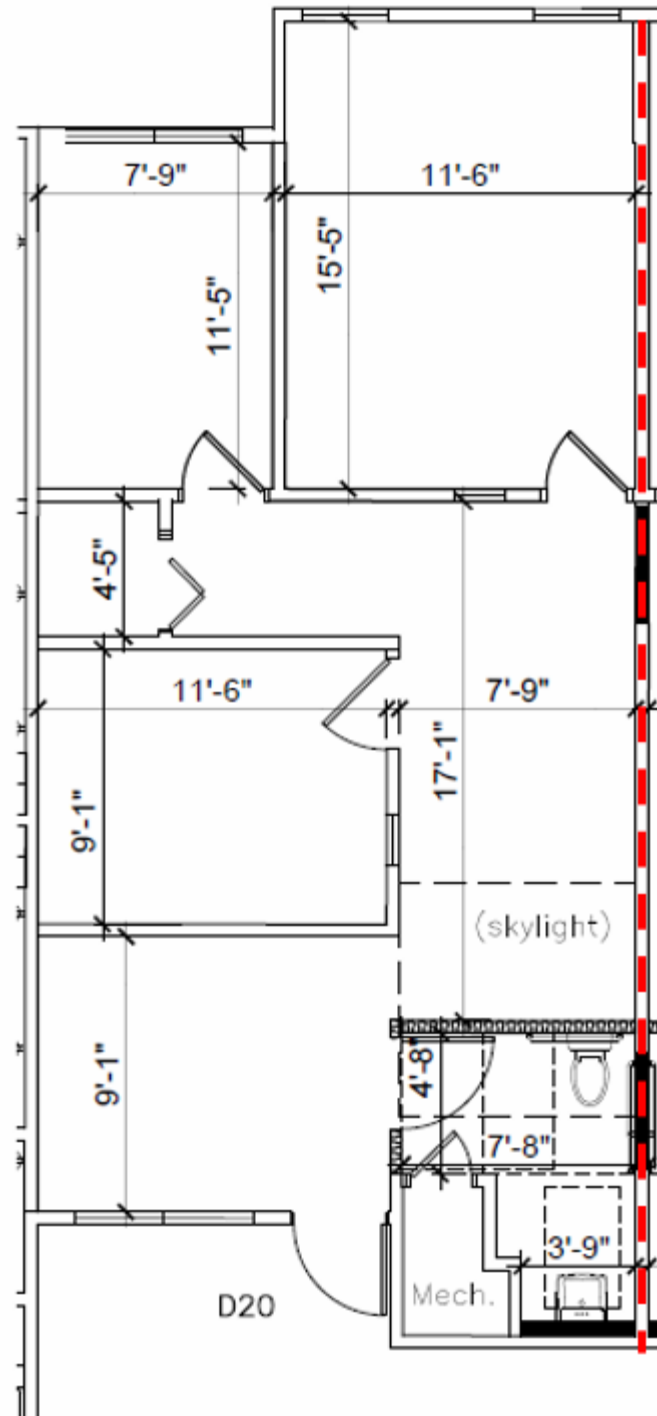
o 856.988.8880 c 609-605-3675
annie@veritasrealestate.net

701 Route 73 North, Suite 4
Marlton, New Jersey 08053

Floor Plan(s) Cherry Hill Executive Mews



Suite D-20 – 700 RSF



FOR MORE INFORMATION CONTACT:

Rick Schwartz

o 856.988.8880 c 856.669.9115
rick.schwartz@veritasrealestate.net

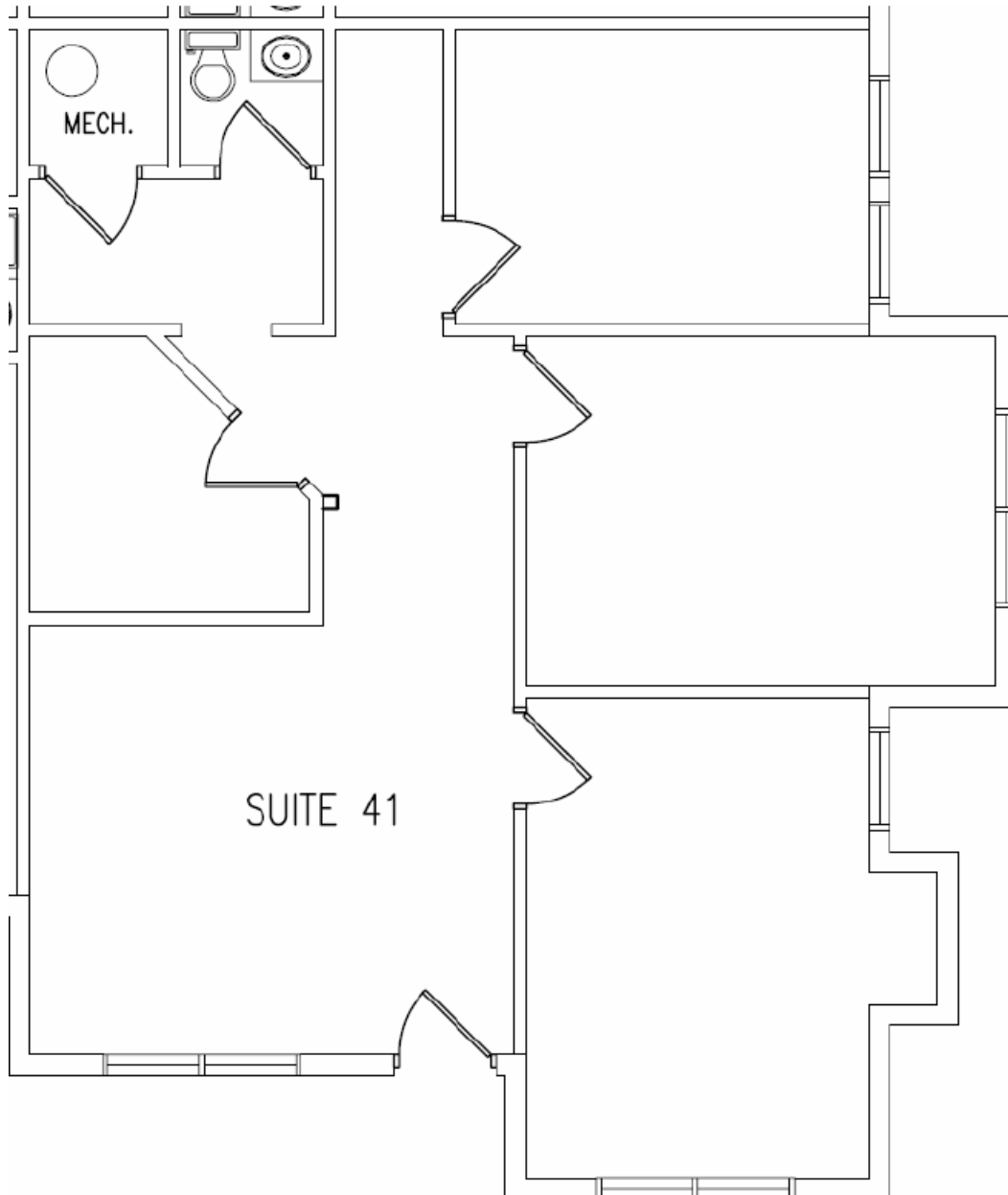
Annie Schwartz

o 856.988.8880 c 609-605-3675
annie@veritasrealestate.net

Floor Plan(s) Cherry Hill Executive Mews



Suite H-41 – 1,058 RSF



FOR MORE INFORMATION CONTACT:

Rick Schwartz

o 856.988.8880 c 856.669.9115
rick.schwartz@veritasrealestate.net

Annie Schwartz

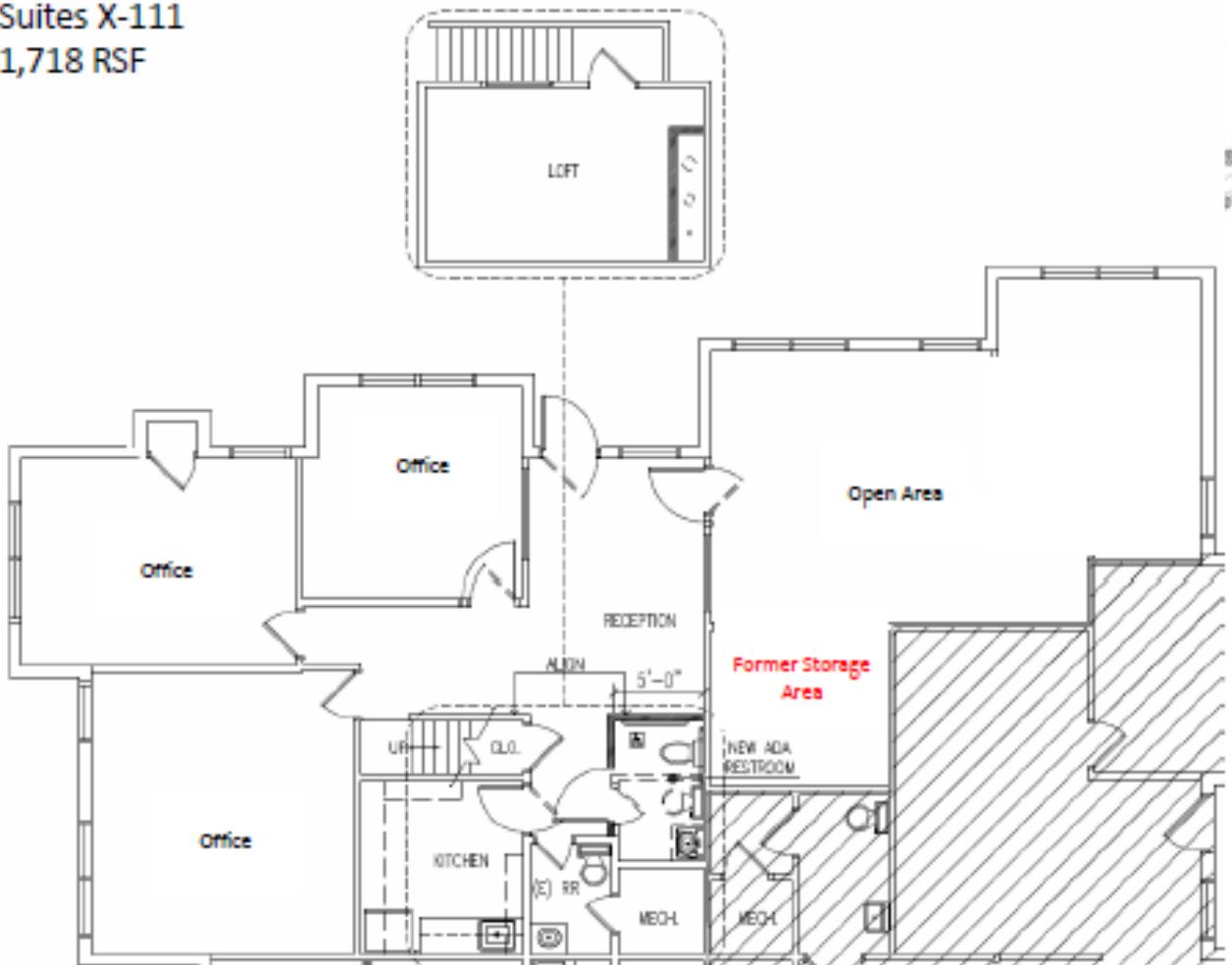
o 856.988.8880 c 609-605-3675
annie@veritasrealestate.net

Floor Plan(s) Cherry Hill Executive Mews



Suite W-111 – 1,718 RSF

Cherry Hill Executive Mews
Suites X-111
1,718 RSF



FOR MORE INFORMATION CONTACT:

Rick Schwartz

o 856.988.8880 c 856.669.9115

rick.schwartz@veritasrealestate.net

Annie Schwartz

o 856.988.8880 c 609-605-3675

annie@veritasrealestate.net